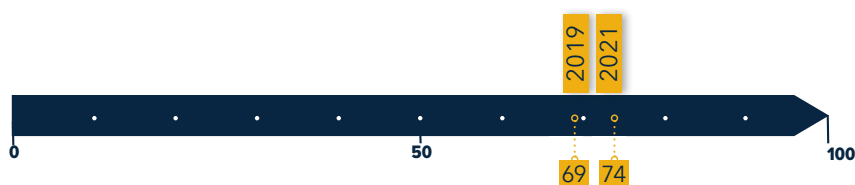


NEW ZEALAND

GLOBAL SCORE:



DASHBOARD FOR SUSTAINABLE ENERGY*

Access to electricity: **100%** of population

Access to clean cooking: **100%** of population

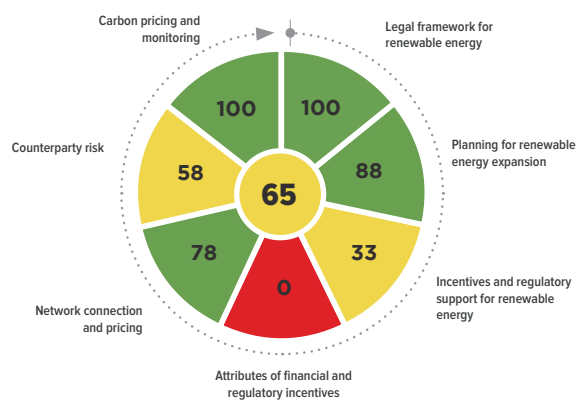
Renewable energy: **30%** of Total Final Energy Consumption

Energy efficiency: **4.02** MJ per US\$ PPP 2017

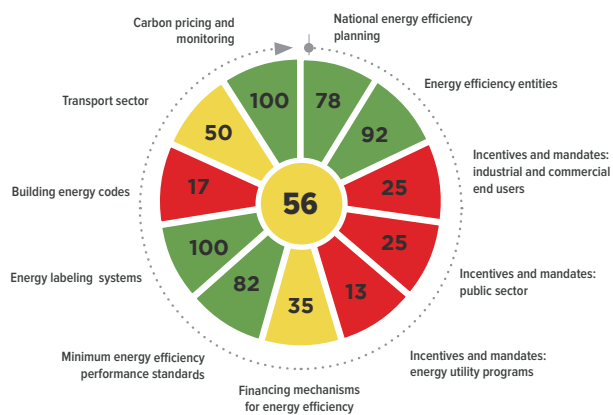


RISE scores (out of 100) per pillar 2021

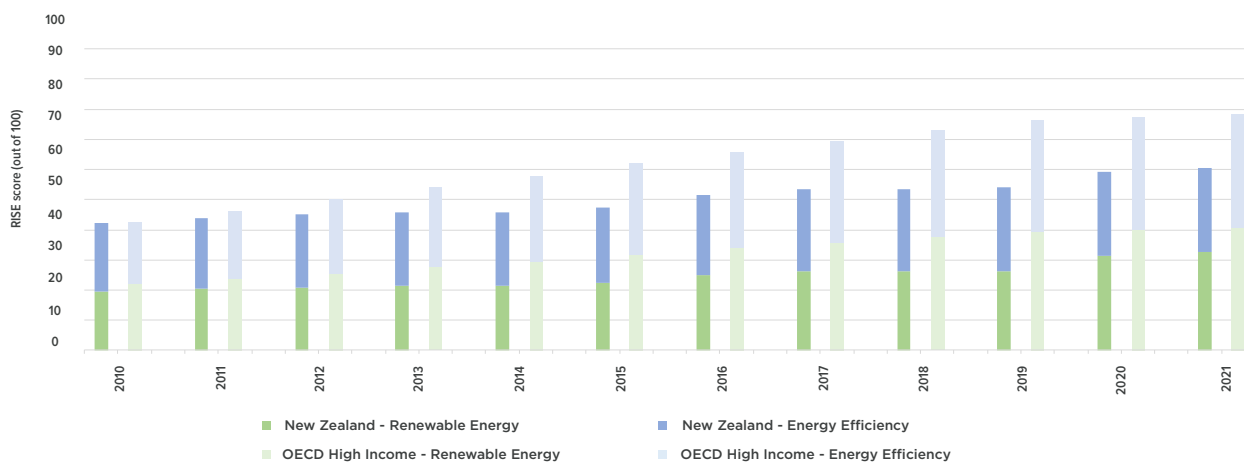
RENEWABLE ENERGY



ENERGY EFFICIENCY



EVOLUTION OF RISE SCORE SINCE 2010



Note: The overall country score is based on the average score of Electricity Access, Energy Efficiency and Renewable Energy indicators.

*<https://trackingsdg7.esmap.org>

Source: World Bank, RISE 2022